

OTA MAP UPDATES QUICK-GUIDE



WHAT IS OTA?

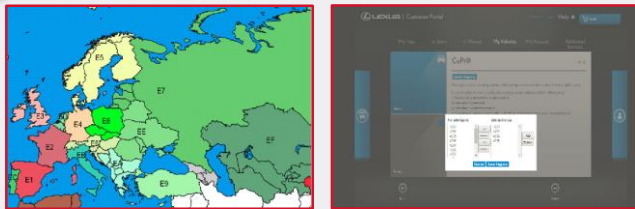
Over-the-air map updates can be performed via a internet-connected smartphone, via WiFi box or by connecting to your household WiFi. They do not require the use of a USB stick.



OVER-THE-AIR

Map updates via internet
(No USB stick required)

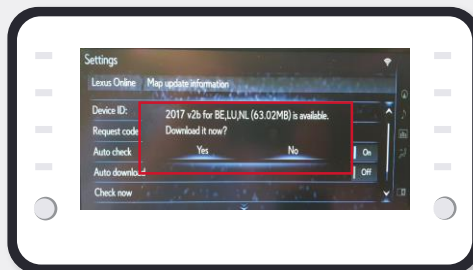
1



SET UP

Select up to 4 regions via Customer Portal

2

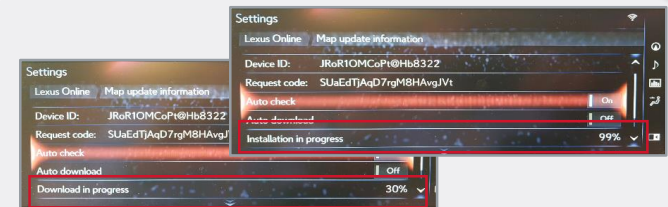


MAP UPDATE AVAILABLE

Pop-up message indicates when Map update is available



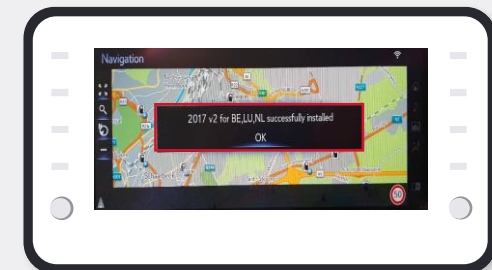
3



DOWNLOAD & INSTALLATION

Installation in the background, Navi and other features unaffected

4



READY TO START WITH NEW MAP

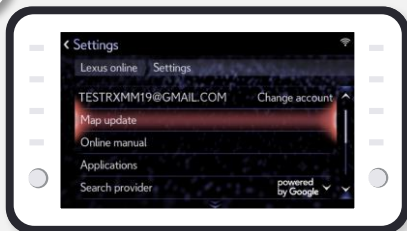
User is informed of update next time they start multimedia

4 STEPS FOR SUCCESSFUL OTA MAP UPDATE

OTA MAP UPDATE STEPS



1



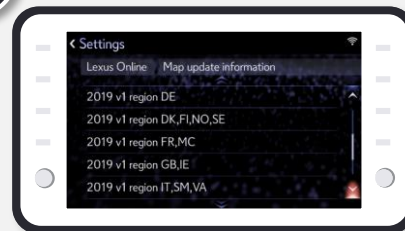
Go To Settings → Toyota Online → Press **"Map update"**

2



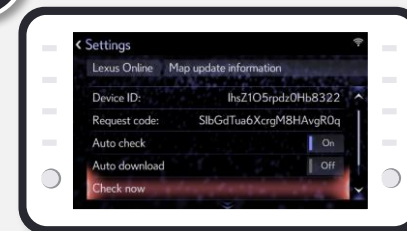
Click on **"Current map version"** to find the versions and the regions you have already downloaded

3



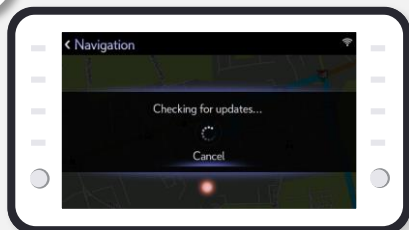
If you are more than 2 updates behind on the OTA download you need to perform a full Map download

4



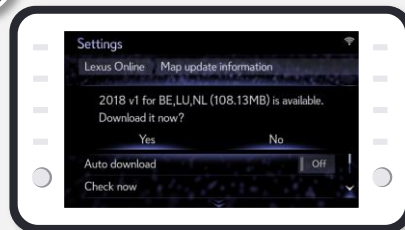
By clicking **"Check now"** you will find out if there are any new downloads available

5



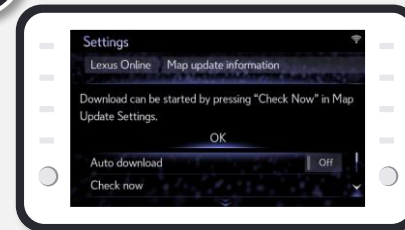
Checking for updates, wait until a message pops up

6



Press **"Yes"** to start downloading the latest map

7



Press **"OK"**



NO USER INTERVENTION REQUIRED

- If you click on **"auto download"** then the system does not ask you if/when a download is ready. It will only inform you that it has downloaded the update.



"OVER-THE-AIR" MEANS THROUGH PHONE OR WIFI BOX



AUTOMATIC UPDATE OF REGIONAL MAP (COUNTRY)

- The Map navigation keeps on working while the download and/or the installation is in progress.
- It does not matter if the system is turned ON or OFF during the OTA map download or installation.



TWO UPDATES PER YEAR